

**SUPPLEMENTARY
SAILING INSTRUCTIONS**

Warne Shield

SATURDAY

14TH MARCH 2020

**Race for the
WARNE SHIELD
Start Time 0900
All Divisions**

**PLEASE NOTE:
Fremantle Sailing Club facilities will be open
prior to the race !**

ORGANISING AUTHORITY

FREMANTLE SAILING CLUB (INC.)

FLAG OFFICERS

Commodore	Ron Greer
Vice Commodore	Anita Wynjte
Rear Commodore Sail	Bill Henson
Rear Commodore Power	Rod Mews Rear
Commodore Fishing & Dive	Neville Norkett

FSC INSHORE RACING COMMITTEE

	Captain	Brian Cooper	
Colin McDougall	Roger Passmore	Steve Delfos	
Ian Ward	Ernie Delfos	Steve Kerr	
Alan Anderson	Amanda Casebier	Francis Hammond	
	Graeme Marin		

CHIEF RACE OFFICER

Colin McDougall

FSC SAILING OFFICE CONTACTS

Sam Blackburn
Phone: (08) 9435 8809

ALL YACHTS ARE REQUIRED TO LOG ON by radio by calling,
"Fremantle Inshore Race Control" stating POB, prior to 0845.
Yachts not doing so will be considered DNS.

SUPPLEMENTARY SAILING INSTRUCTIONS
2020 RACE TO ROCKINGHAM - THE CRUISING YACHT CLUB (TCYC)
SATURDAY 14th March 2020

1. RULES

The rules will be those prescribed by the current Racing Rules of Sailing (RRS) and Fremantle Sailing Club Inshore Sailing Instructions 2017 - 2020 and these Supplementary Sailing Instructions govern the race.

2. SAFETY

Safety Category 6 will apply. NOTE: SI Rule 3.

3. START TIMES

Warning Signal Division 1, 2 and J&M 0855hrs

The Start Boat will display the **White Class Flag** for all divisions to start together.

PLEASE NOTE: A light wind course is now available, please allow time to exit FSC and transit to FSC Mark S prior to warning as there will be no starting delay.

4. THE START AND THE COURSES see * 1 or * 3

***Course 1 :**

The Start line will be in conjunction with FSC Mark "L".

From Start at FSC mark "L" -

To FSC mark S to PORT,

Leaving FSC mark H to PORT,

To Southern Flats Beacon to STARBOARD. [Approx Position 32S 15.2 115E 43.5]
Stay clear of prohibited area along the shore line

To TCYC Buoy "Q" to STARBOARD. [Approx Position 32S 16.4 115E 43.6]

To The Finish Line, crossing in a South Westerly direction.

Line set at approx. 90deg to the lay line to the following mark. Start in that direction.

***Course 3 :**

The Start line will be in conjunction with FSC Mark "S".

From Start at FSC mark "S".

Leaving FSC mark H to PORT,

To Southern Flats Beacon to STARBOARD. [Approx Position 32S 15.2 115E 43.5]
Stay clear of prohibited area along the shore line

To TCYC Buoy "Q" to STARBOARD. [Approx Position 32S 16.4 115E 43.6]

To The Finish Line, crossing in a South Westerly direction.

Line set at approx. 90deg to the lay line to the following mark. Start in that direction.

6. TCYC JETTY FINISH LINE

The finishing line will be an imaginary line between the TCYC Finish Box on top of TCYC Club House and a white PVC Pole moored out from the end of the TCYC Jetty. Sail to mark "Q" keeping this to STARBOARD and then proceed to the finishing line.
(See Attachment A - The Cruising Yacht Club Finish Line)

7. COMMERCIAL SHIPPING

Yachts shall move out of the Cockburn Sound Channel well clear of any approaching commercial vessel. Your attention is drawn to the Inshore Racing Sailing Instruction Paragraph 7. Please read it carefully.

8. TIME LIMIT

Boats that do not finish by 12:30pm will be scored DNF.

9. MOORINGS

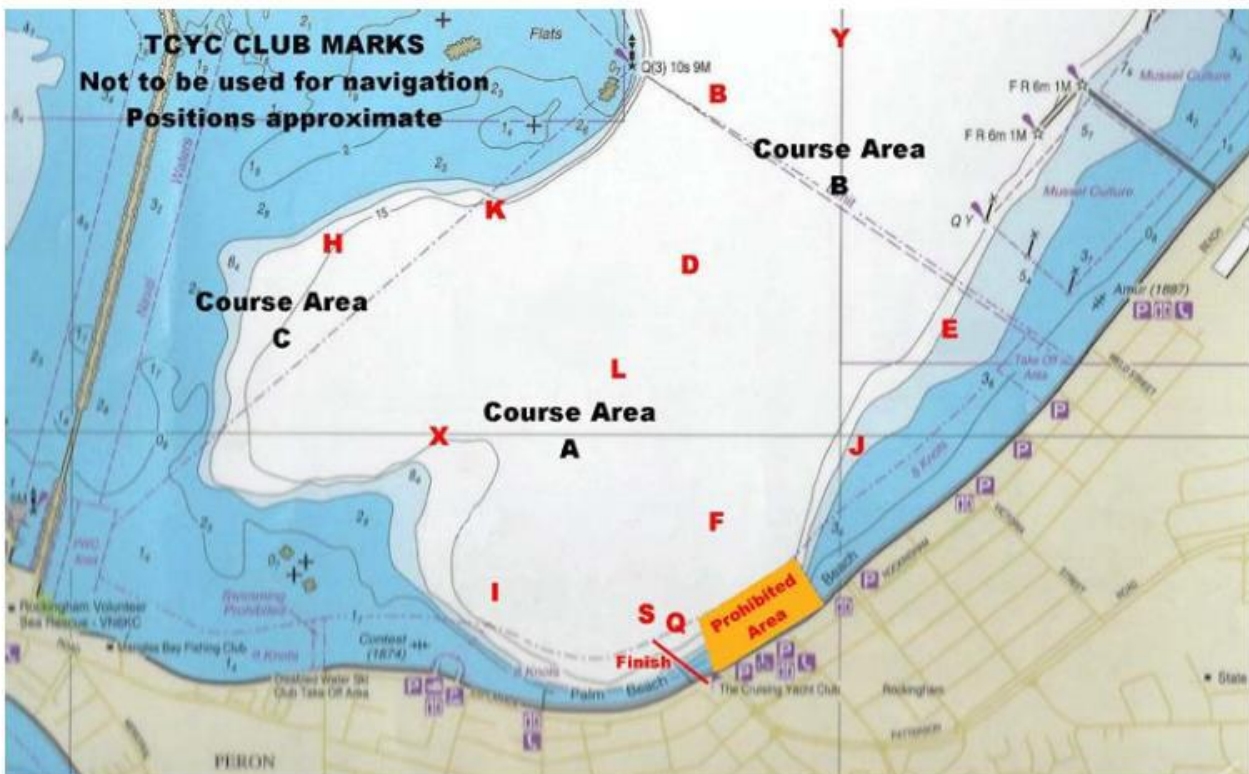
FSC Yachts will be allocated TCYC moorings whilst stopping at the Club for lunch. A shuttle service will collect sailors from the boats and take them ashore and bring them back to their boats in time for the Catalpa Race.

10. ANNOUNCEMENT OF RESULTS

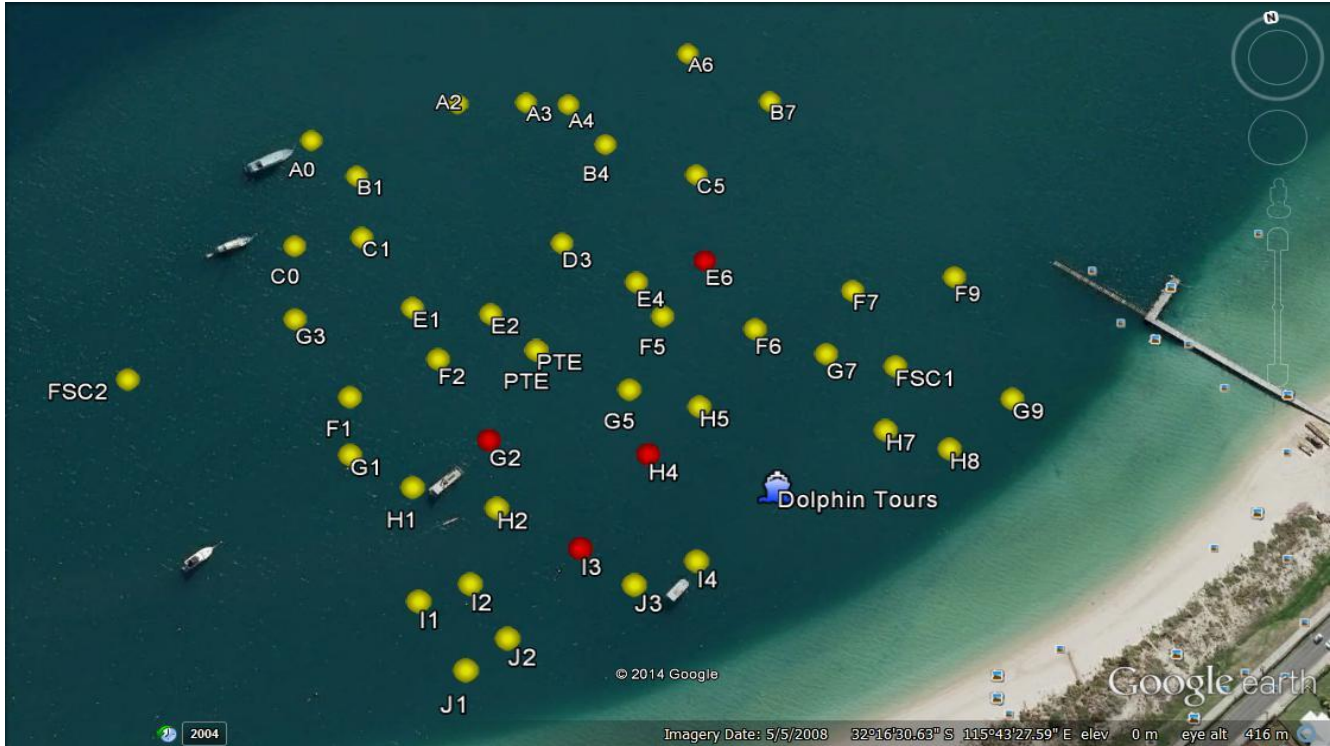
Warne Shield results will be processed and announced together with the Cockburn Cup results at FSC following the conclusion of these races.

ATTACHMENT A

The Cruising Yacht Club (TCYC) Finish Line



TCYC MOORING MAP



**Moorings will not be allocated to specific yachts.
Please use discretion when selecting a mooring allow for the amount of swing you need.**

