



SUPPLEMENTARY SAILING INSTRUCTIONS

COCKBURN CUP

Saturday March 14th 2020

The Fremantle Sailing Club Sailing Handbook 2019-2020
("Red Book") NOTICE OF RACE SAILING INSTRUCTIONS
SHALL APPLY with the following supplementary instructions.

- 1 **Delete FSC Paragraphs, 11, 12, 13, 14, 16.1 and 19.**
All marks and positions will be in the attached course sheet Appendix 1.
- 2 **SAFETY –Safety Category 6. All Competing yachts shall sign on with FSC Inshore Race Control on Channel 72.**
- 3 **START TIMES**
The times given below are those of the Warning Signal.
COCKBURN CUP - Warning Signal = 1340hrs Division 1, 2/3 and JaM
The start boat will display a **White Division Flag** indicating a combined start for all divisions.
- 4 **TIME LIMITS**
Boats in the **COCKBURN CUP** Race not finished by 1730hrs will be scored DNF.
- 5 **COMMERCIAL SHIPPING**
 - 5.1 Particular care shall be exercised in the following areas:
At the entrance to Fremantle Harbour
At the Northern Entrance to and in the Cockburn Sound Channel
 - 5.2 **Penalty**
If Fremantle Ports lodge a formal complaint with Australian Sailing or FSC that a boat has failed to keep clear the race committee shall lodge a protest. RRS 61 is amended such that a hearing shall be conducted. The penalty for such an infringement is disqualification.
 - 5.3 **Damaging a Mark**
Any boat damaging a Fremantle Ports or DoT mark shall notify race control immediately and may be responsible for the cost of its repair. Any cost associated with or arising from an incident under Paragraph Clause 7 in the Red Book shall be borne by the Owner or Person in Charge of the boat/s involved.
- 6 **ANNOUNCEMENT OF RESULTS**
Results will be announced in the FSC Sailors Bar approximately
30 minutes after Finish Crew has returned.

APPENDIX 1

COURSES and MARK POSITIONS

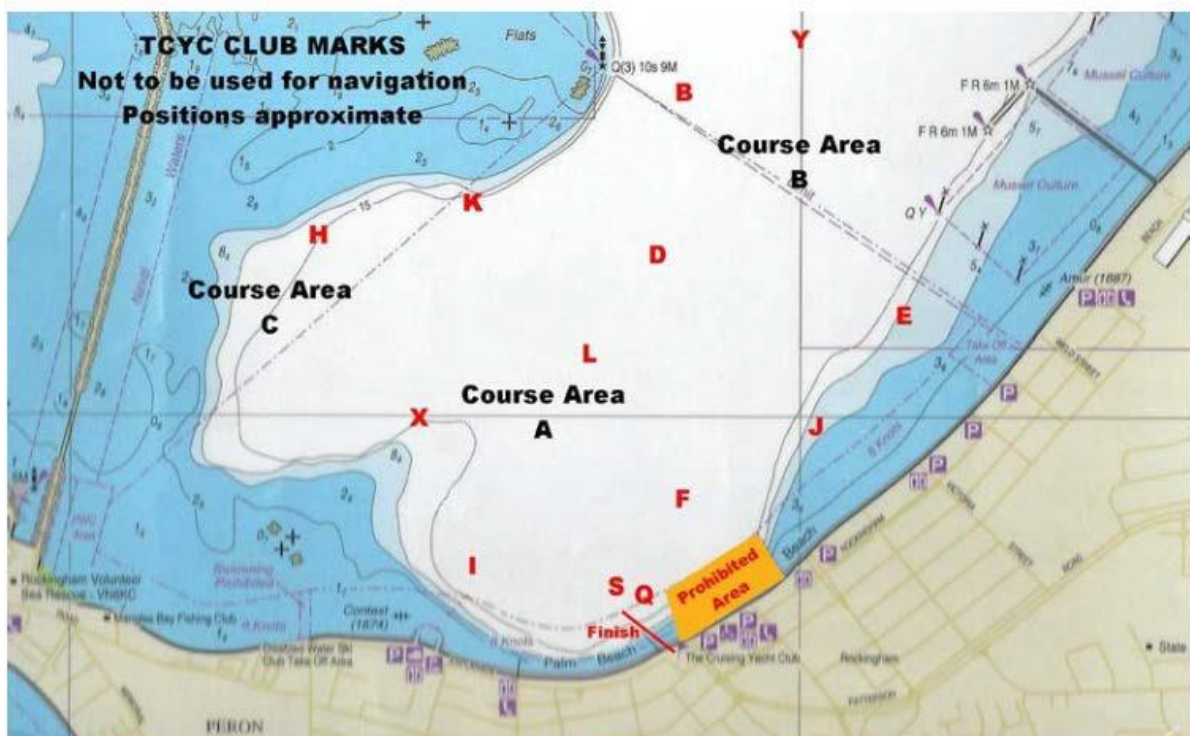
THE COCKBURN CUP COURSE

START LINE The start line shall be an imaginary line between an Orange flag displayed on the staff of the Race Committee boat and the port end Starting Mark. in the vicinity of TCYC Race Mark D, Position 32 15.590 S 115 43.640 E

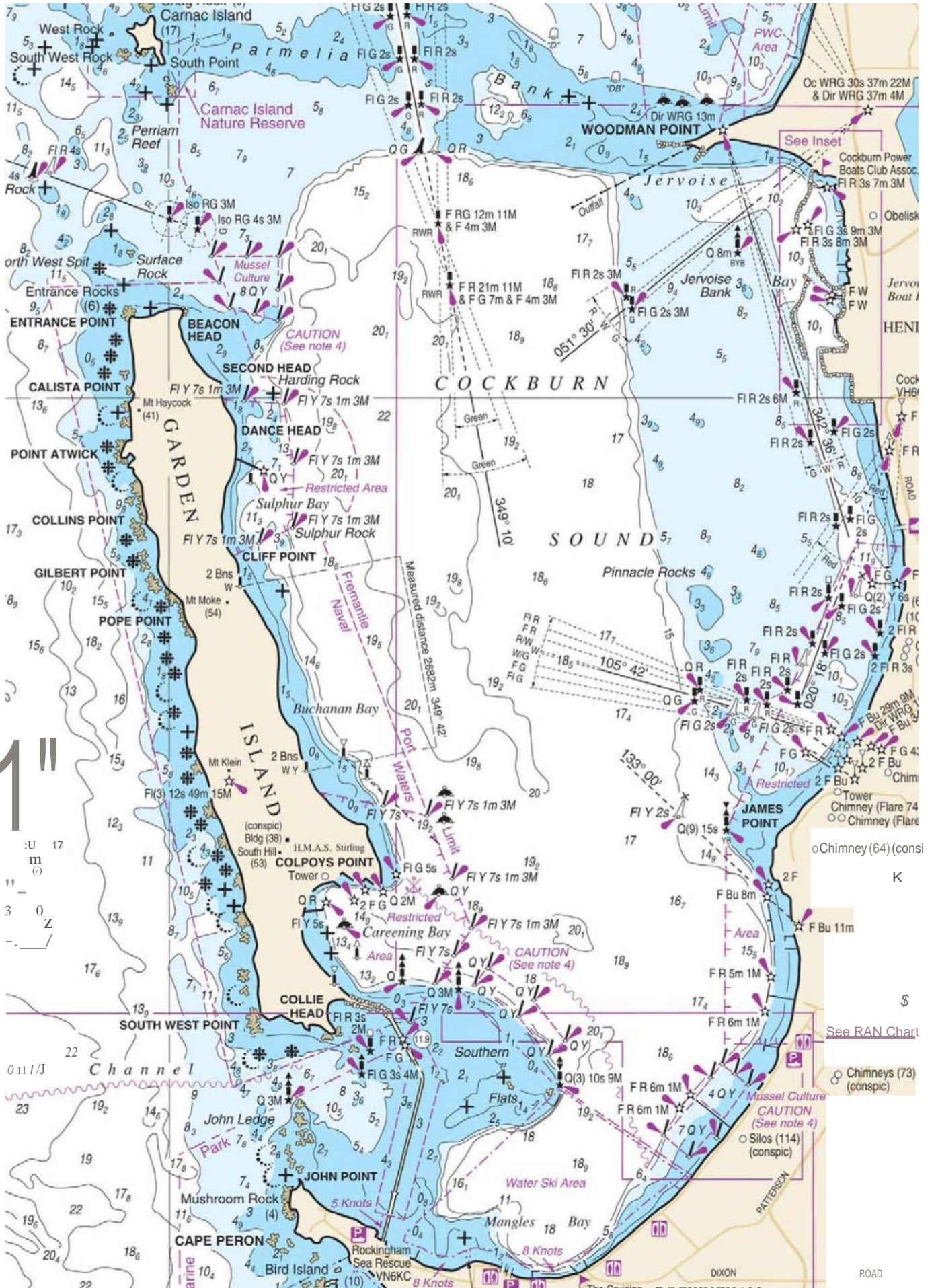
A clearance buoy may be attached by a line from the Race Committee Vessel and must be left to Starboard. The penalty for hitting this buoy is in accordance with R.R.S Rule 31.

1. Leave Southern Flats Eastern Cardinal Marker to port .
2. FSC Mark H to STARBOARD, Position 32 06.700 S 115 42.250E
3. FSC Mark S to STARBOARD, Position 32 05.127 S 115 41.789E
4. FSC Mark W to STARBOARD Position 32 04.000 S 115 41.600E
5. **Finish Line** FSC Mark L to STBD, Position 32 03.800 S 115 43.500E
6. The course may be shortened at any FSC mark to ensure a result.

Map of the TCYC Race Marks



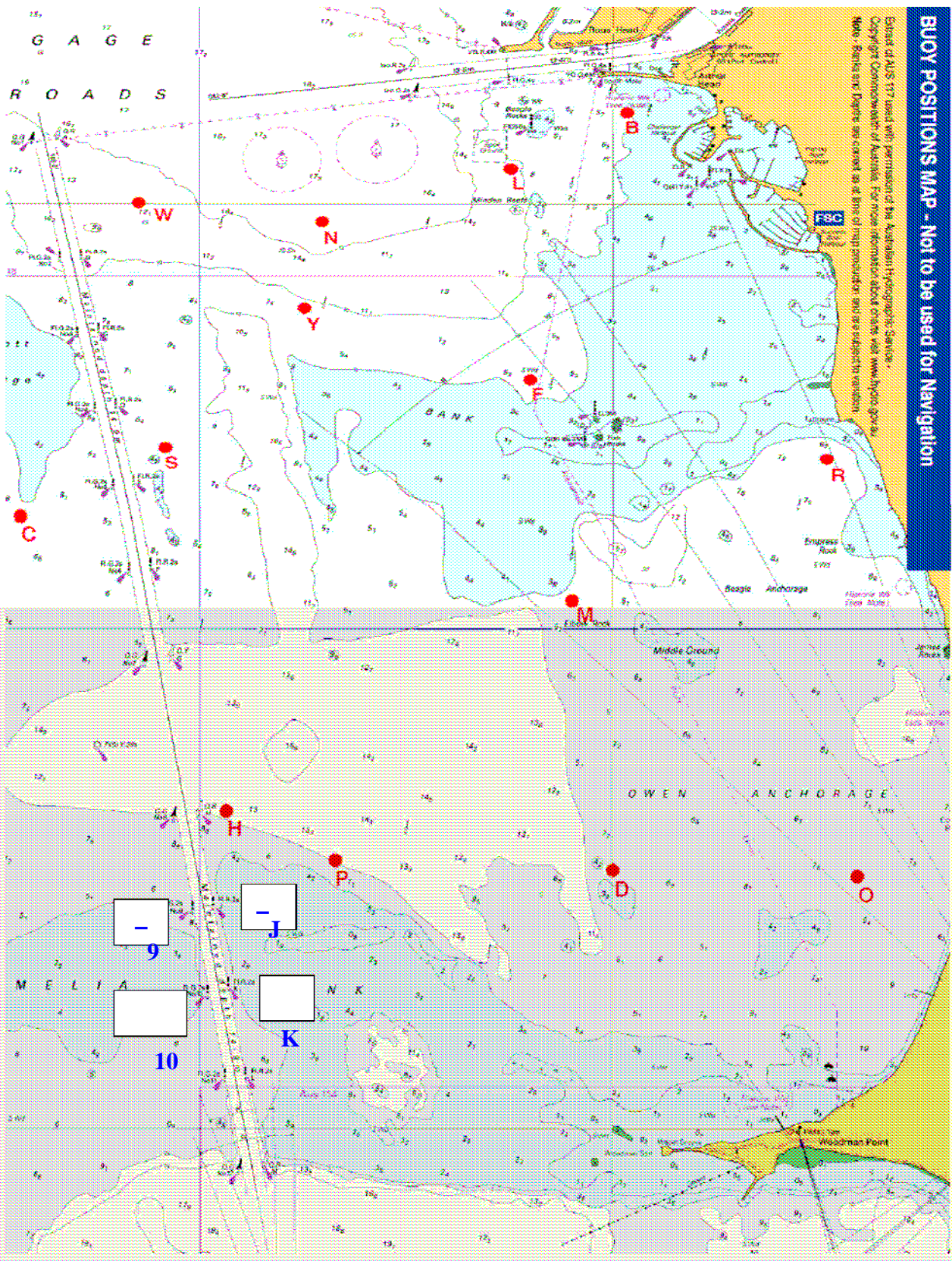
Map of Cockburn Sound



Map of FSC and Cockburn Channel Markers

BUOY POSITIONS MAP - Not to be used for Navigation

Extract of AIS 117 used with permission of the Australian Hydrographic Service.
 Copyright Commonwealth of Australia. For more information about charts visit www.hydro.gov.au
 Note: Symbols and figures are correct as at time of map production and are subject to variation.



22

23